

All About the Doctorate

Information Put Together by Campus Luzern «Cooperated Graduate
Education»

(Status Quo December 2020)

Contacts for all inquiries regarding a doctorate in Lucerne

Christina Cavedon

University of Lucerne

christina.cavedon@unilu.ch



Jürg Schwarz

Lucerne University of Applied Sciences and Arts

Juerg.schwarz@hslu.ch



Annette Tettenborn

University of Teacher Education Lucerne

annette.tettenborn@phlu.ch



Campus Luzern

Project «Campus Luzern – Cooperated Graduate Education»

Initiated by the University of Lucerne, the Lucerne University of Applied Sciences and Arts as well as the University of Teacher Education Lucerne

Supported by swissuniversities

The program makes it possible for the University of Teacher Education Lucerne and the Lucerne University of Applied Sciences and Arts to carry out doctorates together with the University of Lucerne.

Introduction Campus Luzern: General information

First contact point for Campus Luzern is always:

www.campus-luzern.ch

Find information about:

- Offer of methodological courses
- Courses that help prepare for a doctorate at HSLU
- Upcoming events at Campus Luzern
- Contact information for all three Lucerne Universities

General information about the doctorate

Formal requirements for a doctorate:

- Confirmation by a first supervisor at a Swiss University accredited for doctorates (e.g. University of Lucerne)
- Fulfillment of the formal requirements for admission listed in the PhD regulations and guidelines of the faculty the first supervisor is affiliated with.

Information about the doctorate at the different faculties of the University of Lucerne:

- [Faculty of Humanities and Social Sciences](#)
Contact information for questions about formal aspects of the doctorate at the KSF: gsl@unilu.ch
- [Faculty of Law](#)
- Faculty of Economics and Management → [Doctoral Regulations](#) of the Faculty of Economics and Management
- [Faculty of Theology](#)
Contact information for questions about formal aspects of the doctorate at the TF: markus.wehrli@unilu.ch

Websites providing information about doctorates:

www.swissuniversities.ch/en/

→ Amongst others, requirements for admission are listed under «Services»

www.academics.ch

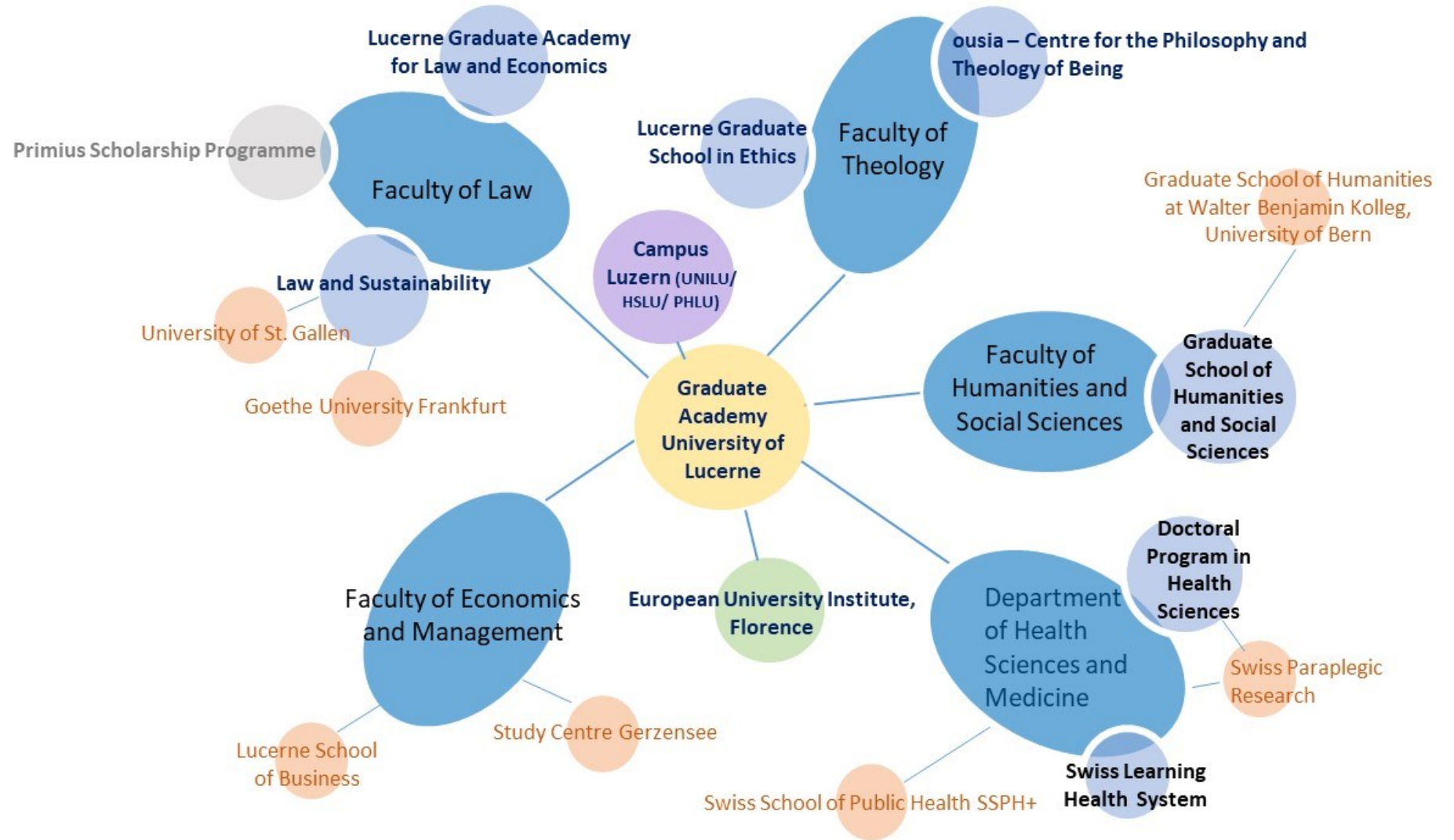
A lot of information all about the doctorate as well as a jobs portal

Networking opportunities for researchers

www.academia.edu

<https://www.researchgate.net/>

Programs and Cooperations the doctorate level at the University of Lucerne



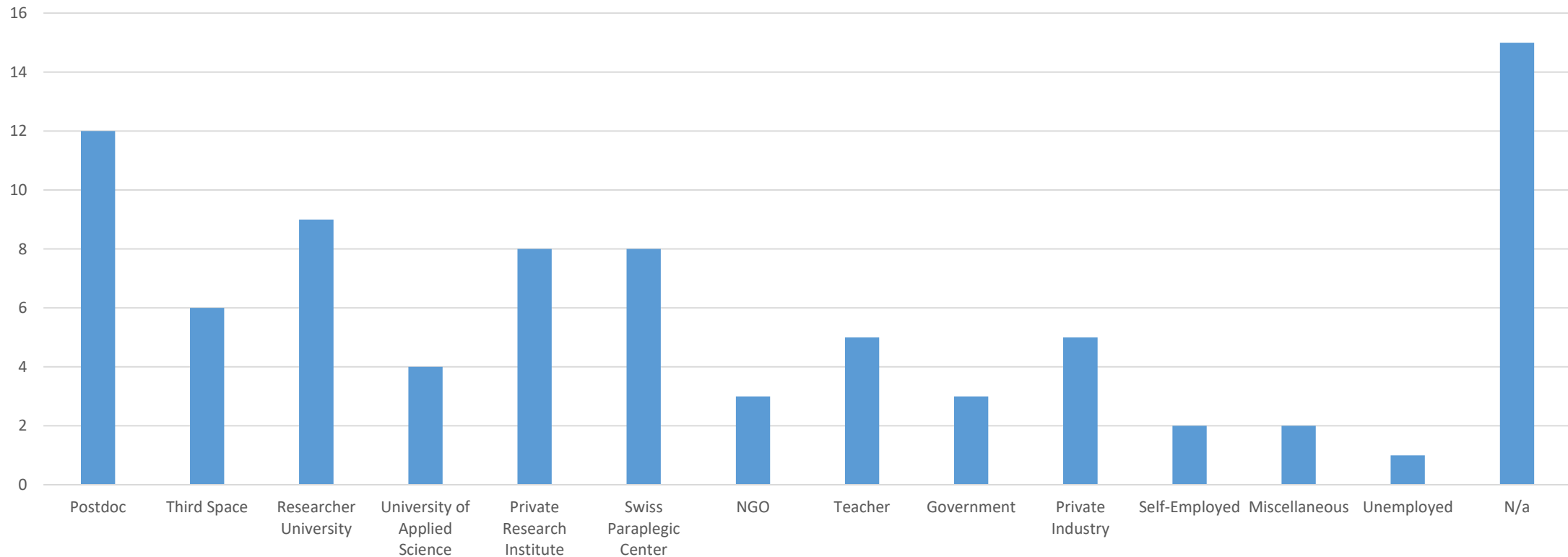
Example: Graduate School of Humanities and Social Sciences (GSL)

Doctoral program of the Faculty of Humanities and Social Sciences – the [Graduate School of Humanities and Social Sciences](#) (GSL).

- 70 doctoral students
- Financial support for attending conferences
- Funds for self-organized workshops and retreats (provided competitively)
- Access to [Generic Skills Courses](#) offered via Graduate Academy UNILU:
- A list of [professors](#) affiliated with the GSL that are eligible as first supervisors (only available in German).

Where are GSL Alumni working?

(as of June 2019; n=83)



Financing options

- At universities, scientific assistant positions exist at each chair. Sometimes there are also advertised doctorate positions, e.g. for SNSF-Projects.
- The University of Lucerne has a [website](#) all about funding opportunities.
- Well-known funding institutions that are not listed on the above-mentioned website:
<https://www.innosuisse.ch/inno/en/home.html>,
<https://www.grstiftung.ch/en.html>;
<https://www.ressortforschung.admin.ch/rsf/de/home.html> (federal research, sometimes interesting research positions are also advertised here [website only available in German and French])

Seed Money Funding

Because drawing up a funding application for a doctoral project takes a lot of time, most universities offer so-called seed money funding.

E.g. University of Lucerne:

- Seed Money Funding Graduate School of Humanities and Social Sciences:
→ «[Financial support](#)»
- «[Anschubfinanzierung plus Bridge](#)» from the Research Committee
(only available in German)

Support of doctoral students by the HSLU

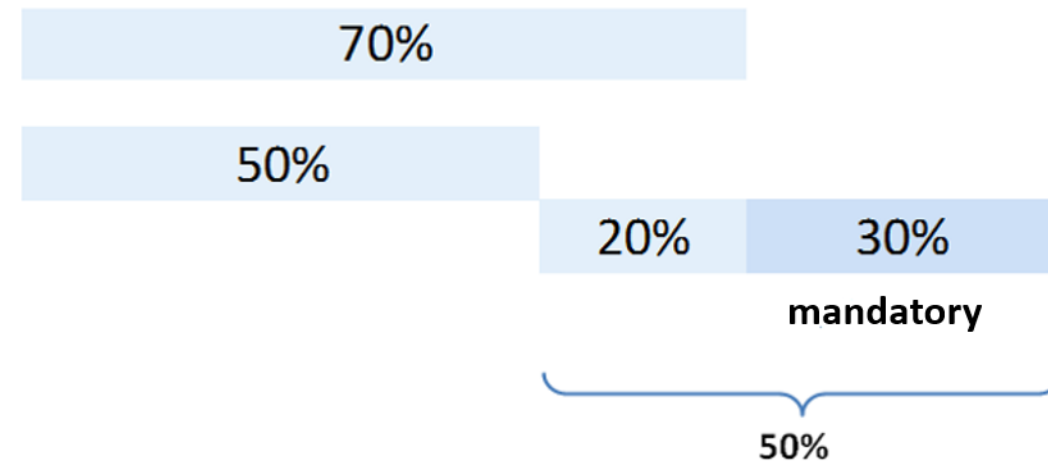
Employment / Occupation

Part-time employment

Work on research project

Work on dissertation

Working Time Model



The working time model is based on the following requirements

- The dissertation project must be conform to the department's research strategy.
- Admission to doctoral studies at the host university has been guaranteed in written form.
The subject of the dissertation has been defined.

Support of doctoral students by the HSLU

General support by the HSLU

- Advice in the choosing of the dissertation subject as well as the search for a first supervisor
- Organization of research forums at the institutes and doctoral colloquia
- Assistance in finding funding for the dissertation (Innosuisse Project, etc.)
- Assistance in the "marketing" of the dissertation (conferences, publications etc.)

Why does the HSLU support doctoral students?

- To support doctoral students is part of the strategic development of the HSLU.
- Dissertation projects ...
 - generate know-how in particular fields
 - create personnel capacities in the area of reserach
 - increase the reputation of the area of research

Doctoral students at the HSLU 2020

Department		# Doctoral Students					Δ% 19 -20
		2016	2017	2018	2019	2020	
Engineering & Architecture	T&A	6	6	11	9	10	11%
Business	W	20	25	28	33	32	-3%
Information Technology	I	0	0	3	5	6	20%
Social Work	SA	4	5	14	11	13	18%
Art & Design	D&K	12	13	16	15	13	-13%
Music	M	4	5	5	5	5	0%
Management & Organisations	RS	0	1	1	1	1	0%
Total		46	55	78	79	80	1%

To do a doctorate at the PH Luzern

A strategic goal...

«Especially the universities of teacher education have to make great efforts in the coming years to qualify their young scholars: among other things by establishing and expanding a mid-level faculty as well as by increasing the number of employees with a doctorate (respectively with a habilitation or an equivalent certificate of qualification where needed with regard to the supervision of doctoral students in cooperation with the universities).» (excerpt from the swissuniversities paper «Strategie 2017-2020 der Kammer PH swissuniversities» [translated from German])

- often (partially) financed in the framework of SNSF-Projects, located at the four Research & Development institutes
- further funding (20% per year) possible via application to the «Forschungsförderkommission [Research Promotion Committee]». For further information, please contact dorothee.brovelli@phlu.ch.